

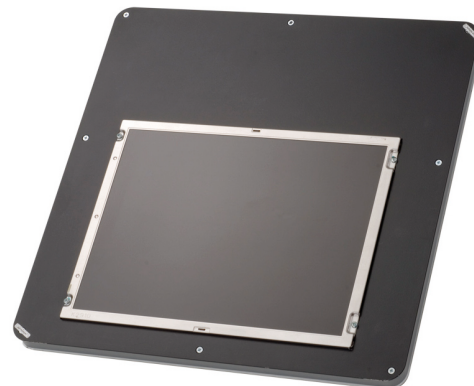
ad notam LCD FP-SERIES

FP 15.1"

MIRROR IMAGE® is the engine that drives images through glass and mirror to deliver superb picture quality. All products are German made, custom-engineered, LCD technology. They are exclusively designed to overcome the unique challenges of operating in ventilation deprived environments and to allow easy and adjustable mounting. The unique magnet mounting system accompanying all products is distinctively designed to suit all particularized placements behind any glass surfaces.

When combined with MAGIC MIRROR®, MIRROR IMAGE® turns completely invisible when turned off. MIRROR IMAGE® technology is patent protected.

The FP LINE is a high-quality multifunction flush fitted monitor. The different models are equipped with FBAS, RGB and DVI signal inputs. In addition to excellent picture quality, the FP LINE monitors offer automatic signal recognition, very long lifetime, wide viewing angle, and automatic color and brightness adjustment.



PRODUCT HIGHLIGHTS

- Flush fitted monitor
- Enhanced picture quality
- Low Voltage
- Doesn't require ventilation
- Sealed casing
- Ultra slim profile
- Magnetic mounting system allows for easy installation and removal
- LCD Technology
- Auto signal detection logic
- Optional RF remote control (no IR eye needed)
- DOG system architecture
- Adjustable mounting system for particularized placement

Article No.:

Screensize	Art.No.
15.0"	FP 151-5

ad notam LCD FP-SERIES

FP 15.1"

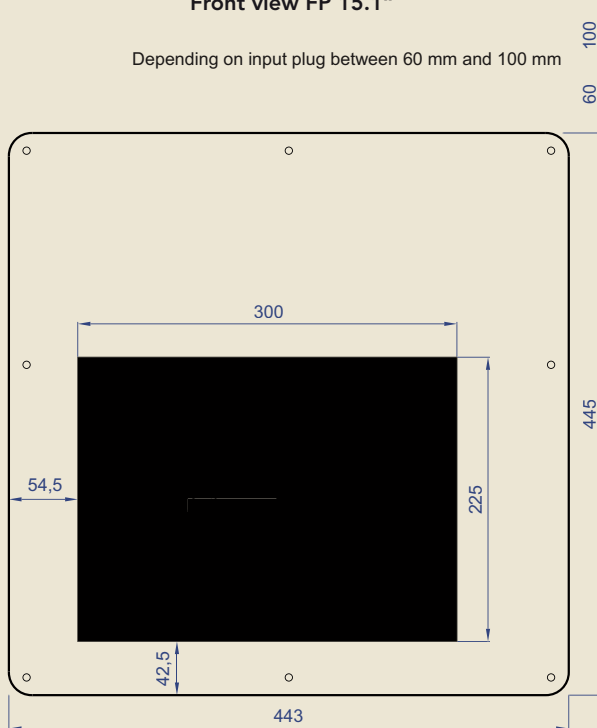
Technical Datasheet:

Top view
FP 15.0" PAL + NTSC

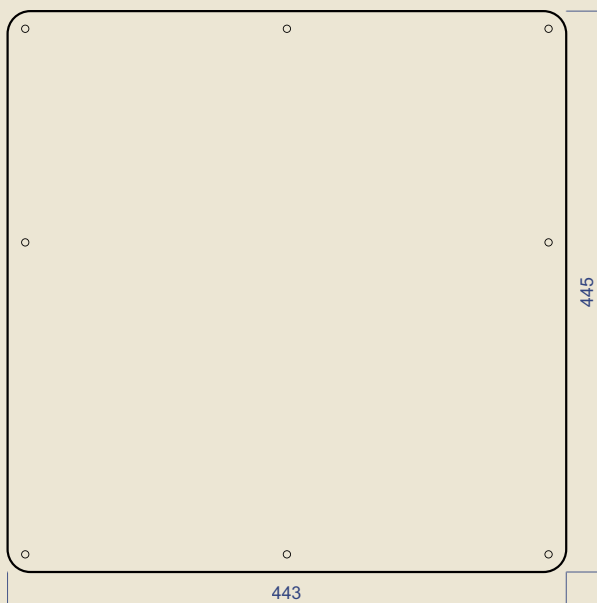


Front view FP 15.1"

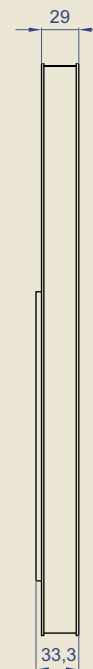
Depending on input plug between 60 mm and 100 mm



Back view FP 15.1"



Side view
FP 15.1"



ad notam LCD FP-SERIES

FP 15.1"

Screen technology:

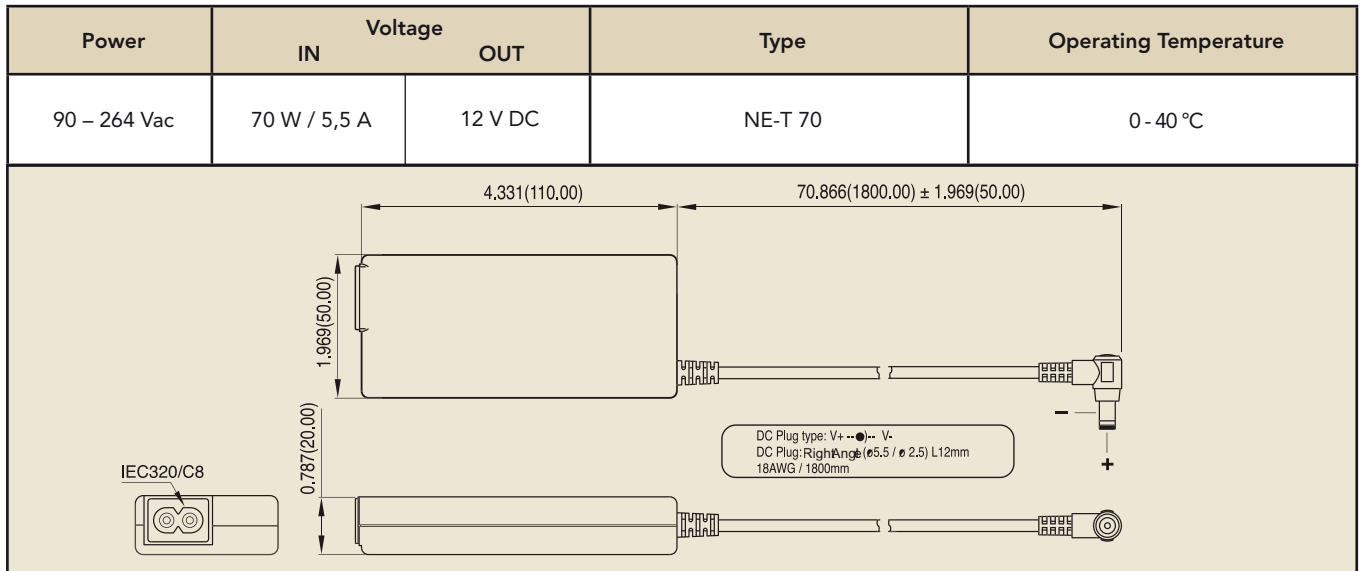
Art.No. / Features	FP 151-5
Display Type	TFT Thin Film Transistor
Active Screen Area	W x H 300 x 225 mm / 11.81 X 8.85" Diagonal 380 mm; 15"
Picture Format	4:3
Physical Resolution	1024 x 768
Viewing Angle	Horizontal 140 Vertical 120
Brightness	550 cd/m2
Contrast	500 : 1
Response Time	8 ms
Inputs	Y/C, FBAS, VGA, DVI, VGA-YUV, VGA- RGB-S
Video Signal Inputs	PAL/SECAM, NTSC, HDTV, YUV, RGB-S, RGB (VGA, SVGA, XGA, SXGA, UXGA)
Operating Temperature	5 to 50 Celsius / 41 to 122 Fahrenheit
Power	DC 12V 34 W / 2800 mA
Weight	4,3 kg
Amplifier Output	-
Equalizer	-
Tuner Receiver	-
Tuner Channels	-
Receivable Tuner Channels	-
FM Radio	-
Image flip	-
Interactive Port RJ45	IR/RF Input (optional) RS 232 (optional) LED control (optional) Power control (optional)
Remote Control Code	-



ad notam LCD FP-SERIES

FP 15.1"

Power supply:



Optional Remote Control Aqua IR:

Type	Feature	Dimensions B x H x D
IR Infrared	Water resistant	110 x 58 x 38 mm 4.33" x 2.28" x 1.44"



Optional Remote Control Slimline:

Type	Color	Dimensions B x H x D
RF xxx	Black	225 x 45 x 16 mm 8.9" x 1.8" x 0.6"

